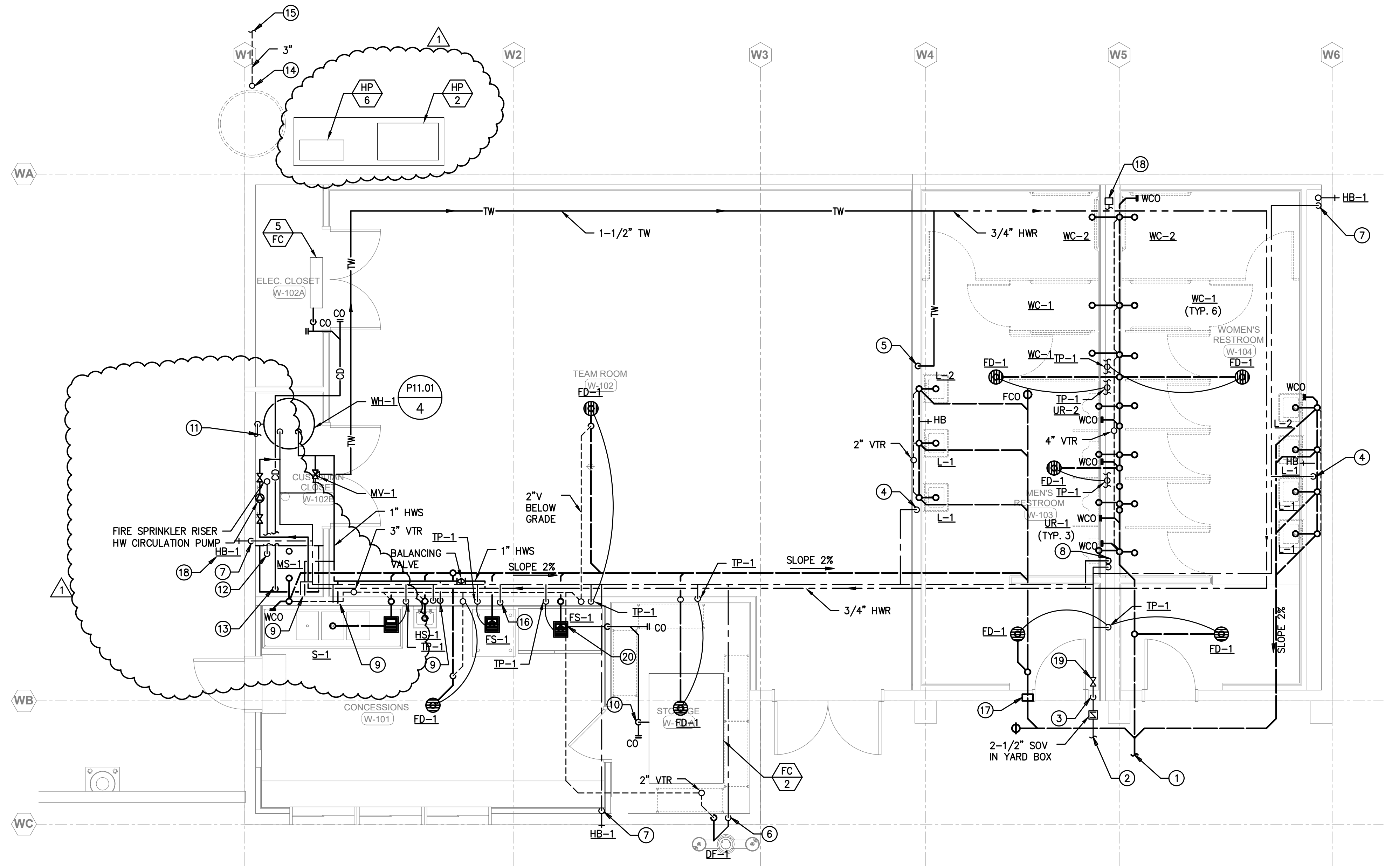


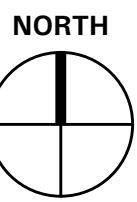
SHEET NOTES

- 4" WASTE, CONNECT TO 4" EXISTING PIPE 5'-0" FROM EXTERIOR WALL OF BUILDING. FOR CONTINUATION REFER TO CIVIL DRAWING SHEET C5.01
- 2 1/2" CW, CONNECT TO 3" EXISTING PIPE 5'-0" FROM EXTERIOR WALL OF BUILDING. FOR CONTINUATION REFER TO CIVIL DRAWING SHEET C5.01.
- 2 1/2" CW UP OFFSET AS HIGH AS POSSIBLE.
- 2 1/2" CW DN, IN PLUMBING CHASE TO HEADER RUN 1 1/2" CW TO EACH WATER CLOSET, 1 1/2" TO EACH URINAL, 3/4" CW TO EACH HOSE BIBB AT 22" AFF, AND 1/2" TO EACH TRAP PRIMER. PROVIDE SOV AND ACCESS PANEL. PROVIDE WATER HAMMER ARRESTOR AT THE END OF LINE. PROVIDE SOV AND ACCESS PANEL.
- 1-1/2" TW DN, IN WALL RUN 1-1/2" HW TO EACH WC AND 3/4" TW TO LAVATORY.
- 3/4" CW DN, IN WALL TO SERVE DRINKING FOUNTAIN AND WATER BOTTLE FILLER.
- 3/4" COLD WATER DN, IN WALL TO HOSE BIBB.
- 1-1/2" CW AND 3/4" TW DN IN WALL WITH 3/4" TW TO LAV AND 1-1/2" CW TO WC.
- 3/4" CW & HW DN IN WALL TO SERVE SINK.
- 3/4" CONDENSATE DRAIN. REFER TO DETAIL 7/P11.01
- 3/4" TEMPERATURE/PRESSURE RELIEF DRAIN SPILL INTO MOP SINK WITH 2" AIR GAP.
- 2" SPRINKLER DRAIN SPILL INTO MOP SINK WITH 2" AIR GAP.
- 3/4" CONDENSATE DN, TO MOP SINK WITH 2" AIR GAP.
- 3" ROOF DRAIN DN FROM ROOF. RUN DN, BELOW GRADE. REFER TO ARCHITECTURAL FOR LOCATION.
- 3" ROOF DRAIN -24" INVERT ELEVATION. TERMINATE 5'-0". FROM BUILDING. FOR CONT. SEE CIVIL DRWG.
- 1" CW DN TO ICE MAKER.
- PROVIDE P-TRAP AND SOV WITH ACCESS PANEL.
- WATER HAMMER ARRESTOR WITH ACCESS PANEL.
- INSTALL BACKFLOW PREVENTER DEVICE. INSTALL 4'-0" ABOVE FINISHED FLOOR, ROUTE TO MOP SINK AND DRAIN TO MOP SINK.
- 3/4" CONDENSATE DRAIN DN TO FLOOR SINK W/ 2" AIR GAP.



BUILDING "W" FLOOR PLAN - PLUMBING

SCALE: 1/4" = 1'-0"

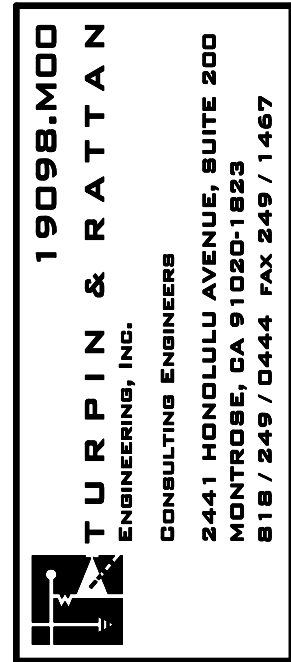


THIS APPROVAL IS FOR ITEMS WITHIN CLOUDED AREAS ONLY. FOR OTHER INFORMATION NOT CONTAINED WITHIN CLOUDED AREAS, REFER TO ORIGINAL DSA APPROVED PLANS.

DO NOT USE THESE PLANS AS SUBSTITUTE FOR THE ORIGINAL DSA APPROVED PLANS

REVISIONS

1 ADDENDUM 1 02/01/2022



NORWALK LA MIRADA UNIFIED SCHOOL DISTRICT
LA MIRADA HIGH SCHOOL NEW FOOTBALL STADIUM PROJECT
13520 ADELEA DRIVE, LA MIRADA, CA 90638

DSA # 03-120551

NAC
ARCHITECTURE

NAC NO. 161-19015
DATE 02/01/2022

ADDENDUM 1

FLOOR PLANS
BUILDING "W" -
PLUMBING

P7.02